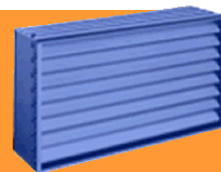


# FLOOD VENTS

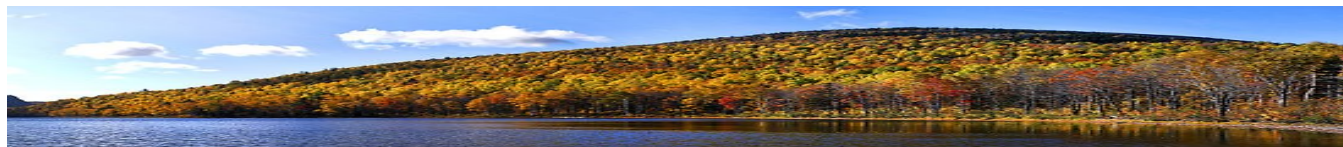
The Official Update of the Rhode Island Floodplain Management Program



Volume 2, Issue 3

Fall 2011

Welcome to ***Flood Vents***, the quarterly issued floodplain newsletter from the Rhode Island Floodplain Management Program.



## NOAA Releases Vertical Datum Transformation Tool

NOAA has released the first edition of a free vertical datum transformation (VDatum) tool that allows users to produce a set of consistent geospatial data over coastal and interior areas of the contiguous United States, removing the differences between the vertical reference systems of land- and water-based data. VDatum was jointly developed by NOAA's National Geodetic Survey, Center for Operational Oceanographic Products and Services, and Office of Coast Survey. Coverage will be updated regularly and will be expanded to Puerto Rico, the U.S. Virgin Islands, Alaska, and Hawaii in the near future.

Click [here](#) to learn more

## FEMA Releases Updated Coastal Construction Manual

In August, FEMA released the fourth edition of its "Coastal Construction Manual: Principles and Practices of Planning, Siting, Designing, Constructing, and Maintaining Residential Buildings in Coastal Areas." The manual provides a comprehensive approach to planning, siting, designing, constructing, and maintaining coastal homes. Volume I (253 pp.) provides information about hazard identification, siting decisions, regulatory requirements, economic implications, and risk management. Volume II (400 pp.) contains in-depth descriptions of design, construction, and maintenance practices that can increase the durability of homes in the harsh coastal environment and reduce economic losses associated with coastal disasters. The Residential Coastal Construction website provides links to additional information to augment the manual.

Review the manual [here](#)

### Michelle F. Burnett

State Floodplain Coordinator  
[michelle.f.burnett@us.army.mil](mailto:michelle.f.burnett@us.army.mil)

### Emily Pysh

State Hazard Mitigation Officer  
[emily.pysh@us.army.mil](mailto:emily.pysh@us.army.mil)

### Jess Stimson

Floodplain Mapping Coordinator  
[jessica.r.stimson@us.army.mil](mailto:jessica.r.stimson@us.army.mil)

Rhode Island Emergency Management Agency

645 New London Avenue  
Cranston, RI 02920





## Corps Reports on Initial Research into Effects of Woody Vegetation on Levees

The U.S. Army Corps of Engineers (Corps) has released the results of a [study](#) on the impacts of trees on levees. In the report, “Initial Research into the Effects of Woody Vegetation on Levees” (57 pp. Volume IV of IV: Summary of Results and Conclusions), researchers note that the presence of trees on a levee increases the uncertainty associated with levee integrity and performance, noting that a tree may either increase or decrease the factor of safety and that because of the many variables, including climate, moisture, soil types, tree species, and levee designs, the full impacts of trees on levees may never be fully quantifiable. The Corps remains confident that a well-constructed levee with well-maintained grass cover represents the optimal goal for reducing the uncertainty of the performance of levee systems, but will consider continued research into the impact of trees on levees as it seeks to improve its levee safety policies and procedures.

## National Levee Database Opens to the Public October 27, 2011

Reprinted from National Committee on Levee Safety Levee Safety Connections Newsletter: Vol. 1, No.3, Sept. 2011

On October 27, 2011, the U.S. Army Corps of Engineers (USACE) will officially open the National Levee Database (NLD) to the public. The NLD is a living, dynamic database that, for the first time, allows visualization and the ability to search nationally the location and condition of levee systems. Currently the NLD includes information on more than 14,600 miles of levee systems in the USACE program. USACE is currently working with the Federal Emergency Management Agency to include information on levees participating in the National Flood Insurance Program.

The goal is to expand the database to include all levees constructed and/or operated by other federal agencies as well as non-federal levees. When information on all federal and non-federal levees is included, the NLD will provide a single comprehensive source for users, will allow those flood-fighting to identify areas of concerns, and will allow residents to become more informed about the levees in their neighborhood.

[Click to join the \*Levee Safety Connections\* newsletter mailing list](#)



## ASFPM's National FloodProofing Conference V



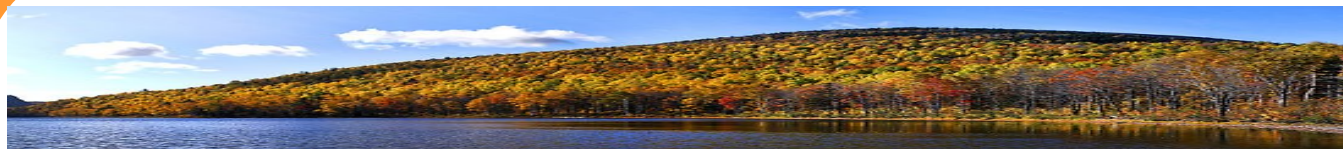
**November 28 – December 1, 2011 in Sacramento, CA**

12 Core CECs for CFMs

Registration is now open! Elevation? Wet floodproofing? Dry floodproofing? Buyout? Acquisition? Relocation? All of these nonstructural / floodproofing techniques, and the policies surrounding them, will be discussed at the 5th National Floodproofing. We will highlight the various floodproofing methods, products, techniques, programs, funding sources, and issues that have developed since the first four triennial conferences. Exhibitors will showcase the state-of-the-art in materials, services, equipment, accessories and techniques Tuesday through Wednesday. Poster displays will demonstrate what works (and doesn't!) in terms of project application. Wednesday will feature a tour of local nonstructural and floodproofing techniques, with return to networking in the Conference Exhibit Hall. Additional training workshops are offered on Monday. Plenty of time is planned for attendees to exchange ideas and view the exhibits, so opportunities to network will be ample, as they are at all ASFPM-sponsored conferences. Additional information can be found on the [NFPC conference page](#).

## NFIP Extended Through November 18, 2011

Early on October 5, 2011, President Obama signed the continuing resolution that includes a provision reauthorizing the NFIP through November 18, 2011.



## Upcoming Training Opportunities

### Substantial Damage Workshop on November 8, 2011

The Towers, 35 Ocean Road Narragansett RI 02882

### Floodplain Management 101 Workshop on November 16th, 2011

The Towers, 35 Ocean Road Narragansett RI 02882

### Freeboard Webinar on November 30th, 2011

For more information please visit the RIFMA [site](#)

### Coastal Construction Workshop on January 18th, 2012

AMICA at 100 Amica Way, Lincoln RI 02865

Contact us for more details or follow the registration instructions [here](#)

## **\*\* SAVE THE DATE \*\***

### RIFMA Annual Conference on May 2, 2012

More information to come in the next *Flood Vents* installment

## NFIP Fun Fact

There were 1,776 NFIP claims paid out following the March 2010 floods totaling \$42,912,559

- \$35,504,502 in building payments
- \$7,355,863 in contents payments
- Average payment = \$24,162.48



Flood Vents is a product of the Rhode Island Floodplain Management Program